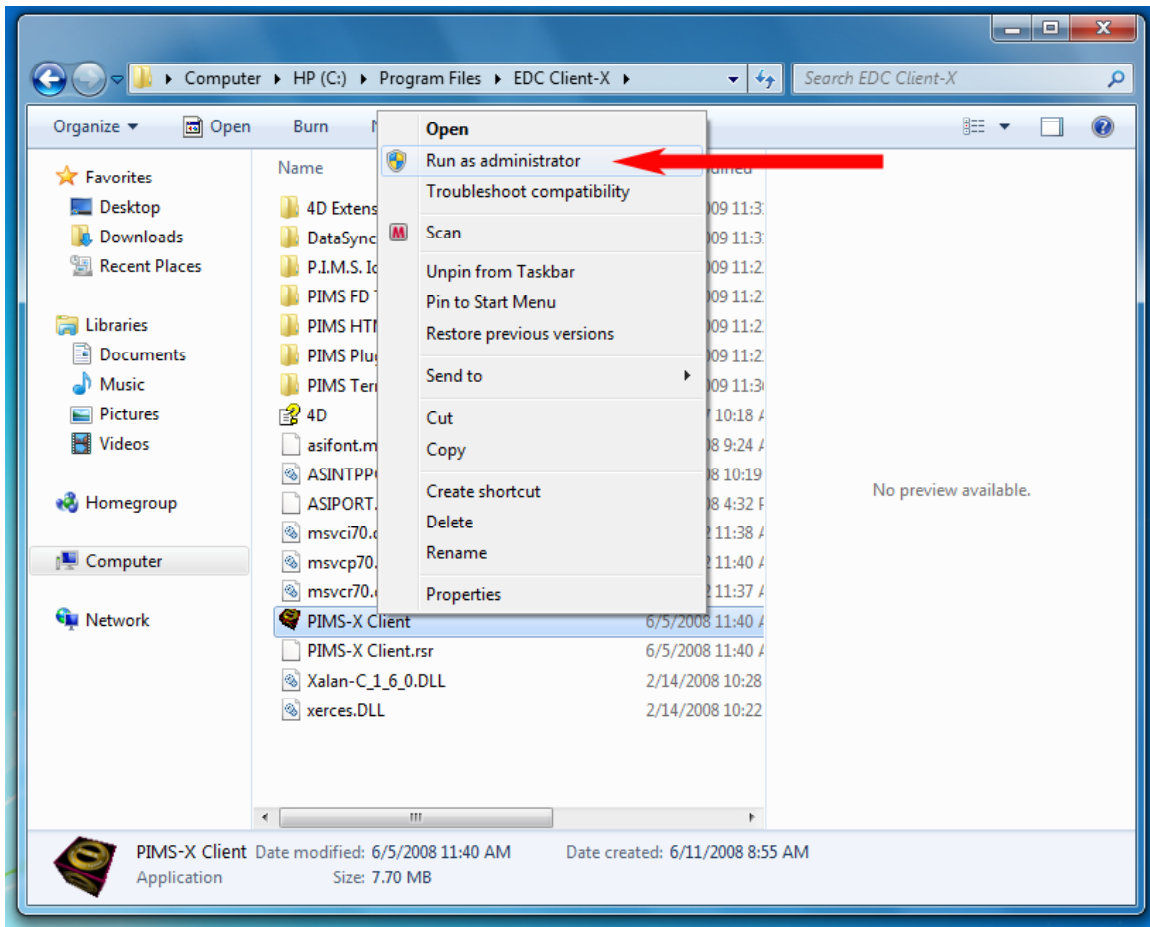


PIMS-X And Windows 7

The current versions of PIMS-X are compatible with Microsoft's Windows 7 operating system...

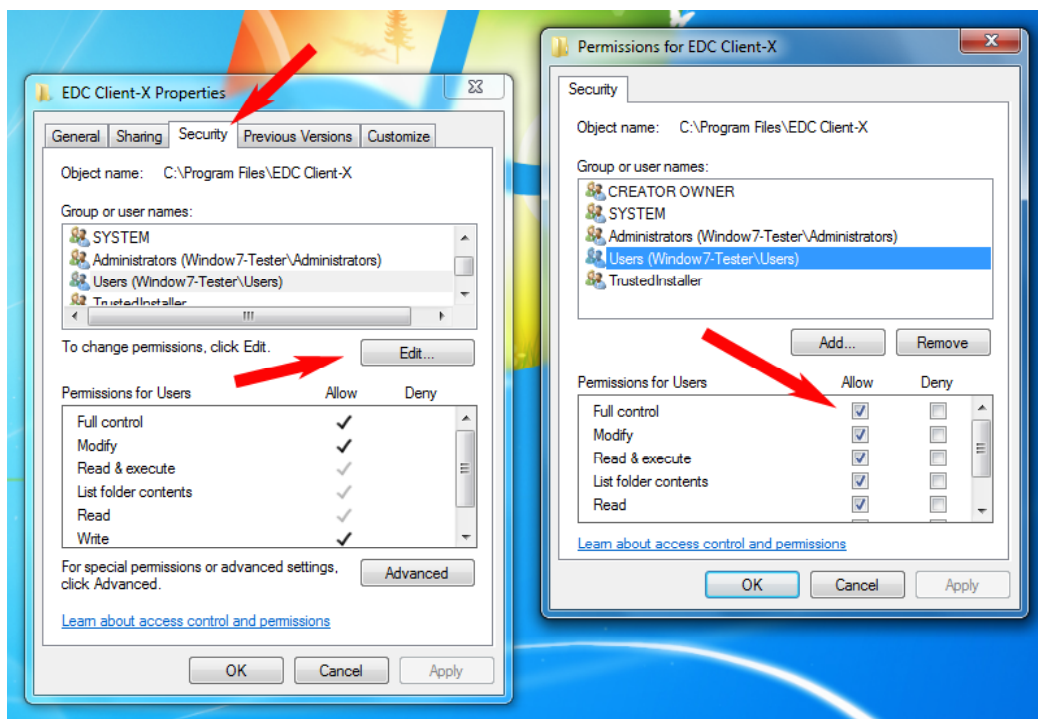
However, all flavors of PIMS-X (Single-User, Client, and Server) need permission to write to whatever disk volume it's running on. This can be accomplished in a couple of ways:

You can "right-click" the PIMS-X application and select "Run as administrator" (assuming you are logged-in as an Administrator for that machine):



This will give the PIMS-X application the privileges it requires to go about it's business on that machine.

The second method is a better and more lasting way to accomplish this, especially if your machine it set to run PIMS-X automatically at start-up (like the PIMS-X Server):



You need to select the folder that your PIMS-X application is installed in, and “right-click” it to adjust it’s properties.

Go to the “Security” TAB, and click the “Edit...” button. This will open the folder’s “Security” page.

Now make sure that the “Users” et-all have Permissions to have full access to this folder, especially the “Full control” and “Modify” functions. This will allow your PIMS-X application the ability to write to it’s various “Preferences” and “Temp” files.

There are of course other ways to accomplish this at a deeper level, but that is beyond the scope of this Tech Note...

Also be sure and let any “Virus” software you have know that PIMS-X is allowed to read/write to the hard drive, as well as gain access to the Internet if and when needed.

Please Note:

PIMS-X applications do not need to run in “Windows XP” emulation mode, and run fine as a regular Windows 7 application. However if you do run into any difficulties you can try Emulation Mode, but so far there has been no need to do so.