

## Addendum

---

# ENTERING YOUR REGISTRATION NUMBERS:

The following is a excerpt from the “[4D\\_2004\\_Install\\_Guide.pdf](#)” document. This section describes how to enter the necessary Serial and Product numbers into the 4D Server (PIMS-X Server).

Once again, the “PIMS-X Server” is an “executable” version of the 4D Server and all of the registration rules apply the same as the 4D product...

---

# 3

## Updating Licenses

This chapter describes the registration procedure of serial and expansion numbers for 4<sup>th</sup> Dimension products. This procedure is necessary in order to activate 4D products that you have acquired in your working environment.

---

*Note* With 4<sup>th</sup> Dimension 2004, product registration is carried out essentially via the Internet. You must have an Internet connection and an e-mail account in order to register.

---

First of all, you must obtain a serialization file from 4D in order to activate your 4<sup>th</sup> Dimension or 4D Server application. To do this, you must have a customer account, created during your initial connection.

Next, if you have additional expansion licenses (for example *4D Web Server*, *4D Web Services* or 4D Client connection licenses), you must also install them in your environment.

This chapter describes the following operations:

- **Activating a 4D application**, describes the serialization procedure for a 4<sup>th</sup> Dimension application.
- **Adding a product or expansion number**, describes adding product numbers or additional expansion number in your 4D environment.
- **License management**, describes how to manage the licenses installed in your 4D environment.

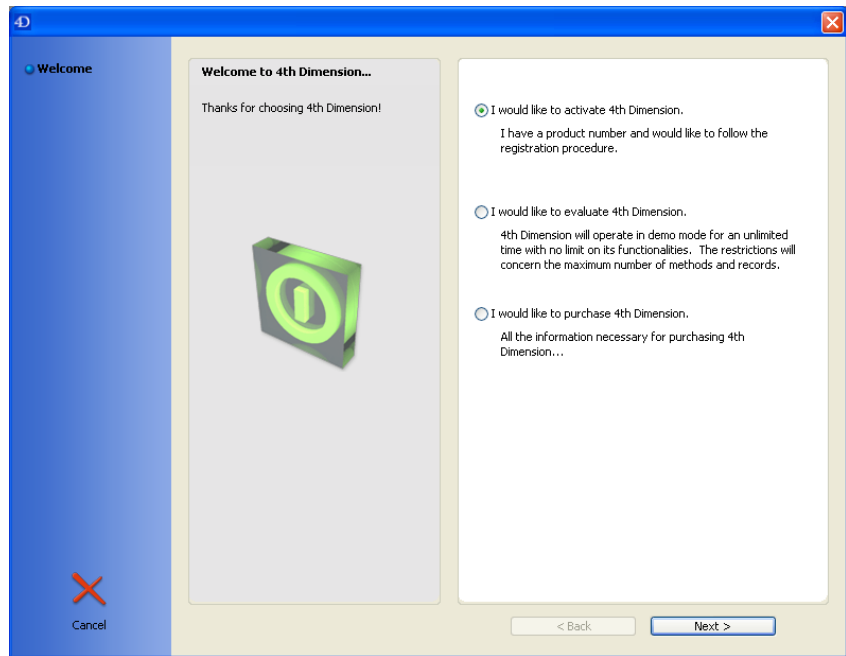
## Activating a 4D application

4<sup>th</sup> Dimension applications are protected and must be activated in order for you to be able to use them in your working environment. This operation may be carried out on line via the Internet or using intermediary files.

► To activate a 4D application:

- 1 Start the 4<sup>th</sup> Dimension application (4<sup>th</sup> Dimension single-user or 4D Server) that you wish to use.

The welcome dialog box appears:



*Note* Once you have activated one 4D application, you can activate others and add expansion licenses directly from this application. For more information about this, refer to the [section “Adding a product or expansion number”](#) on page 31.

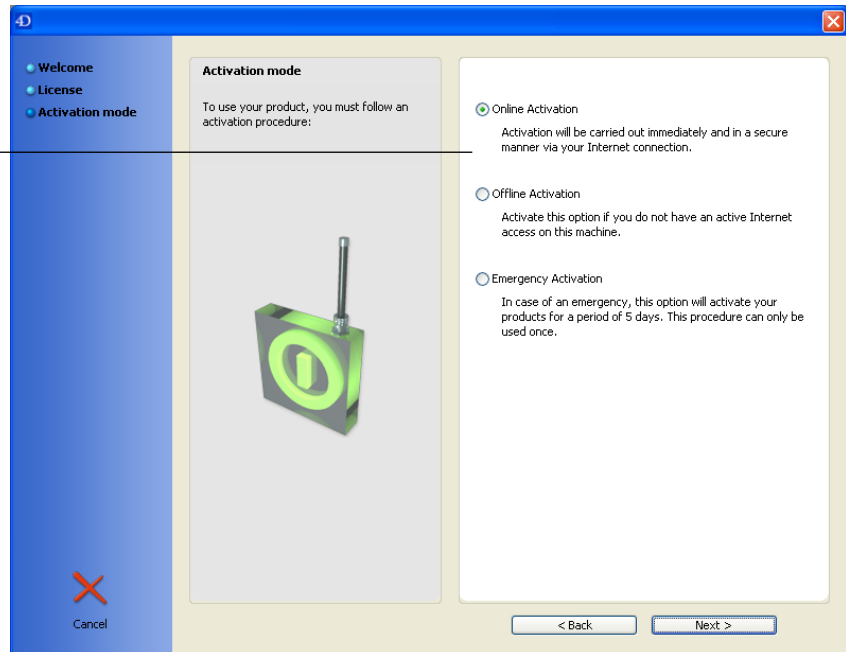
This dialog box offers three options:

- **I would like to activate 4th Dimension:** This option starts a procedure allowing you to activate the 4<sup>th</sup> Dimension application. Use this option if you have purchased 4<sup>th</sup> Dimension and have a product number.

- **I would like to evaluate 4th Dimension:** This option allows execution of the application in Demonstration mode (no number is required). In this mode, the number of objects (tables, method, etc.) that can be created is limited and there is a limited duration for using the Web server and plug-ins. Use this option if you have not purchased a 4<sup>th</sup> Dimension application yet and want to evaluate the possibilities it can offer you.
  - **I would like to purchase 4th Dimension:** This option launches your Web browser and connects you to the online store for 4D products. Follow the instructions displayed on the site.
- 2 Check the **I would like to activate 4th Dimension** option and click on the **Next >** button.

After you accept the license agreement, the following dialog box appears:

Choice of activation mode



The buttons on the right side of the dialog box let you choose among three activation modes:

- **Online Activation:** In this mode, you can create a customer account if necessary, enter your product number, and then send it all to 4D using a secure Internet connection. In return, you will receive a serialization file that is automatically installed by 4<sup>th</sup> Dimension. This mode is recommended in most cases. Refer to the [section “Online Activation” on page 26](#).

- **Offline Activation:** In this mode, the exchange of data between your machine and the 4D Web site is carried out using intermediary files that must be generated and then installed manually. Use this mode for example if your network configuration does not allow you to use the online mode. Refer to the [section “Offline Activation”](#) on page 28.
- **Emergency Activation:** This mode lets you temporarily activate (5 days maximum) the 4<sup>th</sup> Dimension application under certain conditions without connecting to the 4D Web site. Refer to the [section “Emergency Activation”](#) on page 30.

### Online Activation

Online activation is the standard mode for activating your products.

- ▶ To carry out an online activation:

- 1 In the “Activation mode” dialog box, check the **Online Activation** option then click the **Next >** button.

The “Choose account” page appears, which lets you create or use an existing customer account:

**Choose account**

You must have an account with 4D to carry out activation.

Create an account on line  
I do not have an account yet and I would like to create one on line. (This step is mandatory for the initial activation of a 4D product).

Use my existing account  
I already have an account and I would like to use it to activate my 4D products.

Login:

Password:

< Back      Next >

Cancel

- 2 If you already have a customer account, check the Use my existing account option, enter your login and password, and click the Next > button.**

Go directly to step 5.

**OR**

- If you do not have a customer account with 4D (you do not have a login or password), check the Create an account on line option and click the Next > button.**

The “Create account” page appears.

- 3 Enter the information for creating a customer account then click the Next > button.**

---

*Note* The **Next >** button is only active when the fields of the page have been correctly filled in. Make sure that the two passwords entered (minimum 6 characters) are identical and that the e-mail address is valid.

---

The “Summary” page then appears so that you can review the submitted information.

- 4 Click the Next > button to create the account.**

If all the submitted information is correct, the account is created with 4D (the information is sent via a secure mode) and the “Product entry number” page appears. At the same time, you will receive, at the e-mail address submitted, an e-mail confirming your registration and providing you with your login. Be sure not to lose this information.

---

*Note* If an error occurs, the information is not sent and a message appears below the summary list.

---

The “Product number entry” page appears.

- 5 Enter the product number to activate in the “Product Number” area (4D provides you with this number when you purchase the product).**

- 6 Click the Send button.**

The submitted information is then automatically sent to the 4D server in a secure manner via the Internet. After processing and validation, the server returns a serialization file, which is automatically installed on the machine in the Licenses folder (see the [section “Management of Licenses” on page 35](#)). The application is instantly activated and can be used immediately.

In addition, an e-mail is sent to the address provided during registration. This e-mail contains, for backup purposes, a copy of the license file, which can be used if the file installed automatically is lost.

- 7 (Optional) If you have an expansion number for your application, enter it in the “Expansion number” area and, using the menu, select the associated product number. Then click the corresponding Send button.**

As in the previous step, the serialization file is automatically installed and you will receive an e-mail containing a copy of this file.

---

*Note* You can also add expansion numbers subsequently. For more information, refer to the [section “Adding a product or expansion number” on page 31](#).

---

- 8 Click the Next > button.**

The dialog box displays a message indicating that the activation procedure is completed.

- 9 Click on Go to 4D! to open your 4D application.**

## Offline Activation

Online activation requires a machine that is directly connected to the Internet. With certain configurations (firewalls, server machines not connected to Internet, etc.), the mechanisms in place do not work. A message of the “Error during request” type is generally the indication that online activation is not possible.

In this case, you should probably opt for offline activation.

---

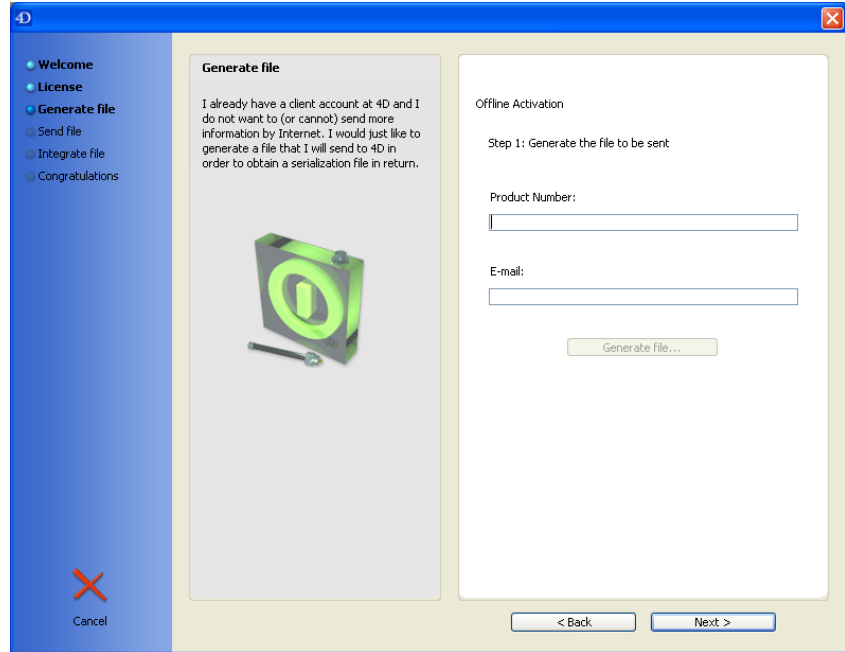
*Note* You must already have a customer account with 4D in order to proceed with offline activation. For more information about creating an account at 4D, refer to the previous paragraph. If necessary, you can create a customer account directly on the 4D Web site.

---

- ▶ To activate a 4D application in offline mode:

- 1 In the “Activation mode” dialog box, check the Offline Activation option and click the Next > button.**

The “Generate file” page appears:



Offline activation is carried out in three steps:

- Step 1: Generate a seed ID file using this dialog box. This file can then be placed, for example, on a machine that has access to the Internet.
  - Step 2: Connect to the 4D Web site and submit your file. In return, you will receive a serialization file by e-mail.
  - Step 3: Install the serialization file and activate 4D.
- 2 Enter your product number and your e-mail address in the upper part of the window, then click on Generate file...**
- A standard save file dialog box lets you choose the name and location of the file to be created on your disk. If necessary, copy this file onto a machine that has access to the Internet.
- 3 Click the Next > button.**
- A page describing the next step (*Send file*) is displayed.
- 4 Using your Web browser, connect to the 4D Internet site at the address indicated in the window and on your registration card, then click on the 4D Registration site link.**

- 5 Follow the instructions on the site — you must provide your login and have the seed ID file that was generated available on your disk.**

After processing and validation, an e-mail is sent to the address provided during registration. This e-mail contains the serialization file.

- 6 Back on the “Send file” page, click the Next > button.**

The page corresponding to the third step (*Integrate file*) is displayed.

- 7 Copy the serialization file onto the machine containing the 4<sup>th</sup> Dimension application, then select it after clicking on the Choose file button.**

You can place the file anywhere on your hard disk; 4<sup>th</sup> Dimension will recopy it into the Licenses folder (see the [section “Management of Licenses”](#) on page 35).

- 8 Click the Next > button.**

The dialog box displays a message telling you that the activation procedure is completed.

- 9 Click the Go to 4D! button to open your 4D application.**

## Emergency Activation

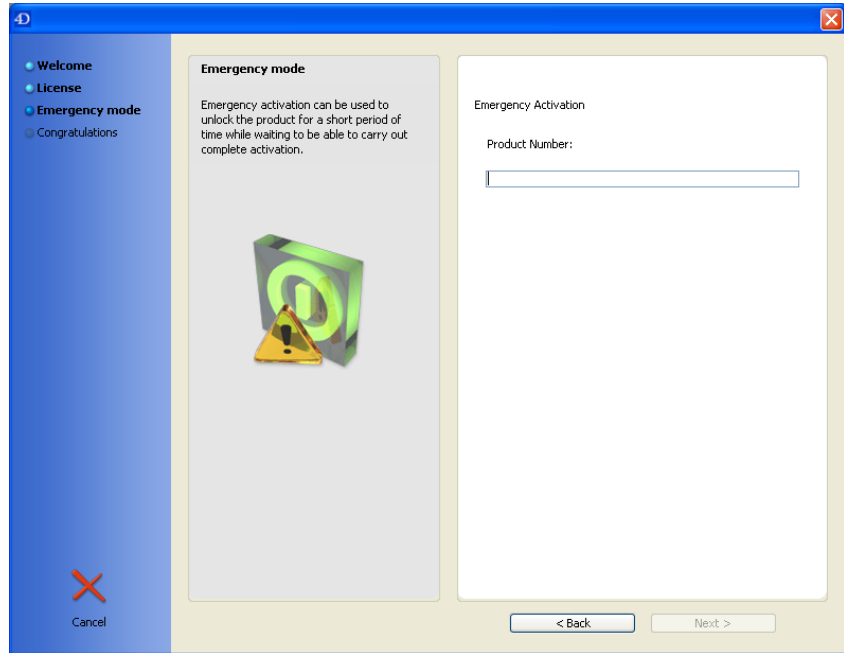
In certain specific circumstances, you might need to activate your 4D application without being connected, for example in the event of a prolonged network failure.

In this case, emergency activation lets you activate the application directly based on the product number — until the situation can be regularized.

Keep in mind that the emergency activation procedure is subject to the following use restrictions:

- It can only be used once with a given product number,
  - Only certain product numbers have access to it,
  - The application is activated for a period of 5 days maximum.
- To carry out emergency activation:
- 1 In the “Activation mode” dialog box, choose the Emergency Activation option, then click the Next > button.**

The “Emergency mode” page appears:



**2 Enter your product number and click the Next > button.**

If the product number is accepted, the dialog box displays a message indicating that the activation procedure is completed.

**3 Click the Go to 4D! button to open your 4D application.**

## Adding a product or expansion number

After activating an initial 4D application, you may need to activate additional products.

Or, you may wish to extend the capabilities of your application, for example by adding plug-ins or extensions. In this case, you will need to add additional expansion numbers. The addition of expansion numbers is required, for example, in the following cases:

- Adding plug-ins (4D Write, 4D View, etc.),
- Adding additional 4D Client connections,

- Adding extensions of the *4D Web Server* or *4D Web Services* type,
- Installing *4D Runtime Volume License* licenses.

*Note* If you have directly purchased an application with extensions (for instance, 4D Server with a Web server), it is not necessary to add an expansion number: in this case, the extensions are included in the main product number.

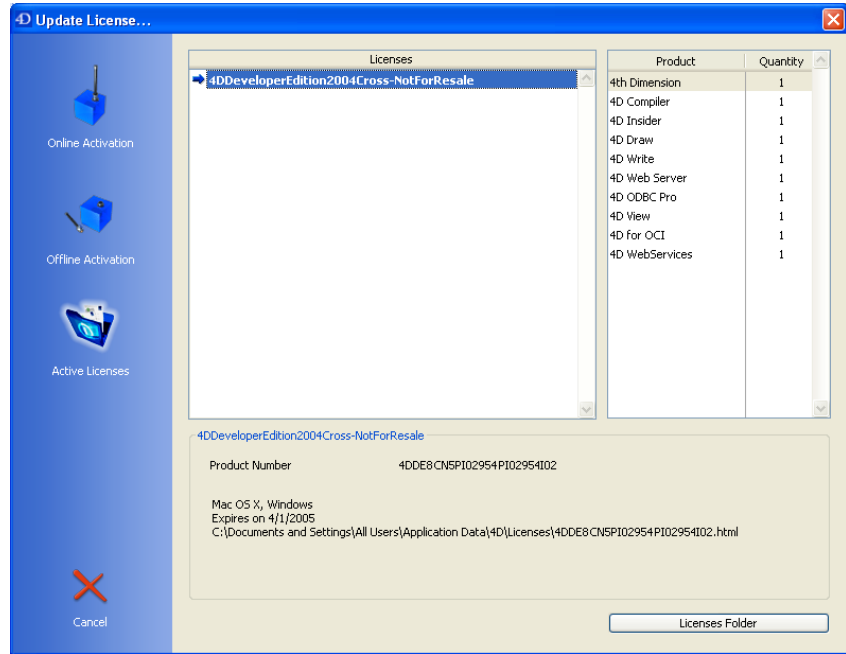
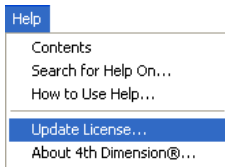
► To add a product or expansion number:

**1 Open a database with 4<sup>th</sup> Dimension or 4D Server.**

The contents of the database are not important.

**2 Choose the Update License... command from the Help menu.**

The following dialog box appears:



- Notes*
- For more information about this page, refer to the [section "Management of Licenses"](#) on page 35.
  - With a 4D single-user application, you can also use the CHANGE LICENSES command to display this dialog box. For more information, please refer to the *4th Dimension Language Reference* manual.

Just as you do when activating the initial application, you must choose either **online** or **offline** activation by clicking the corresponding button in the left part of the window. For more information about these two modes, refer to the [section “Activating a 4D application” on page 24](#).

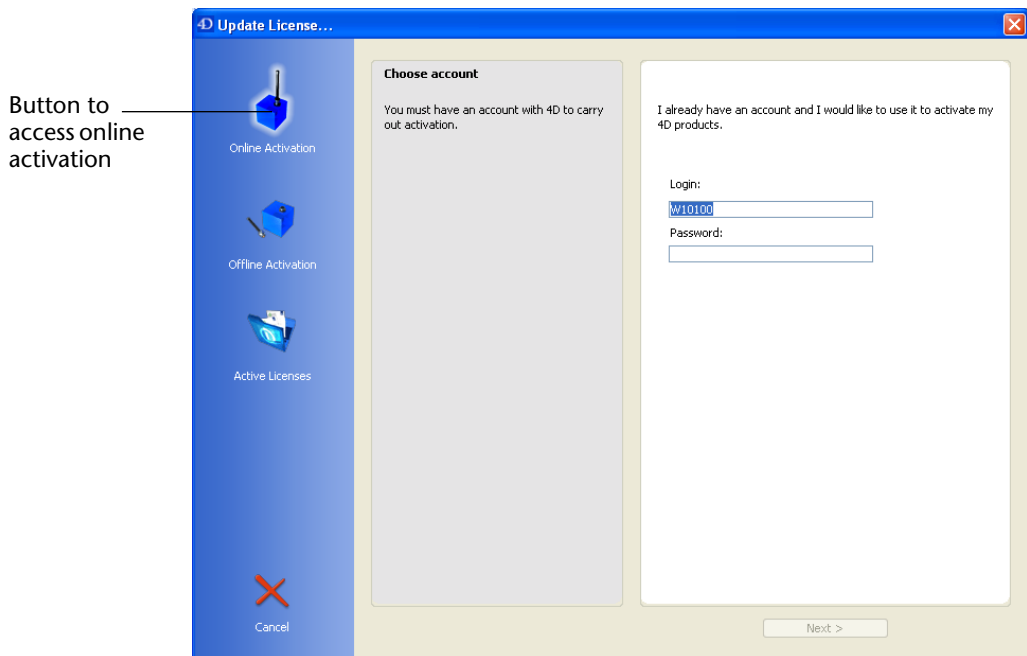
## Adding on line

Adding licenses on line is the standard procedure. This requires a valid Internet connection.

- ▶ To add a product or expansion number on line:

**1 Click the Online Activation button in the Update License dialog box.**

The Choose account page is displayed with your login already entered:



**2 Check that your login is correct, then enter your password and click the Next > button.**

If the information is correct, the “Product number entry” page appears.

**3 Enter the requested information:**

- **Product Number:** Fill in this area if you want to activate a new product (see the [section “Activating a 4D application” on page 24](#)), then click the **Send** button below it. If you only want to add an expansion number, leave this area blank.

- **Expansion number:** Number of the plug-in or extension to activate (supplied by 4D during the order process).
- **Associated product number:** This menu lists all the product numbers registered on the machine. Select the number with which you want to associate the expansion number — each plug-in or extension must be attached to a product number — then click the **Send** button below the area.

The information entered will then be sent to the 4D server automatically via the Internet. After processing and validation, the server returns a serialization file. This file is installed on the machine automatically in the Licenses folder (see the [section “Management of Licenses” on page 35](#)).

You must restart your application for the new licenses to be taken into account.

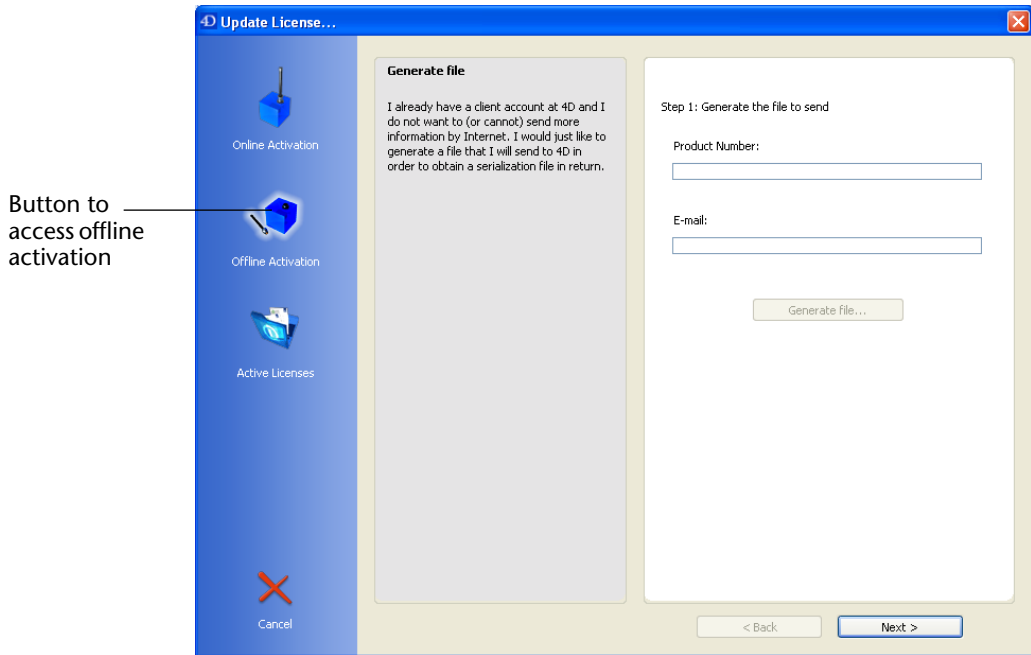
At the same time, an e-mail is sent to the address provided during registration. This e-mail contains, for backup purposes, a duplicate of the serialization file that can be used to replace the automatically-installed file if ever it is lost.

### Adding off line

You may want to add licenses off line, for example when the machine is not connected to the Internet. For more information about off-line activation, refer to the [section “Offline Activation” on page 28](#).

- ▶ To add a product or expansion number off line:
  - 1 **In the Update License dialog box, click on the Offline Activation button.**

The following page appears:



The steps for updating licenses in offline mode are identical to those for activating a product: for more information, refer to the [section “Offline Activation”](#) on page 28.

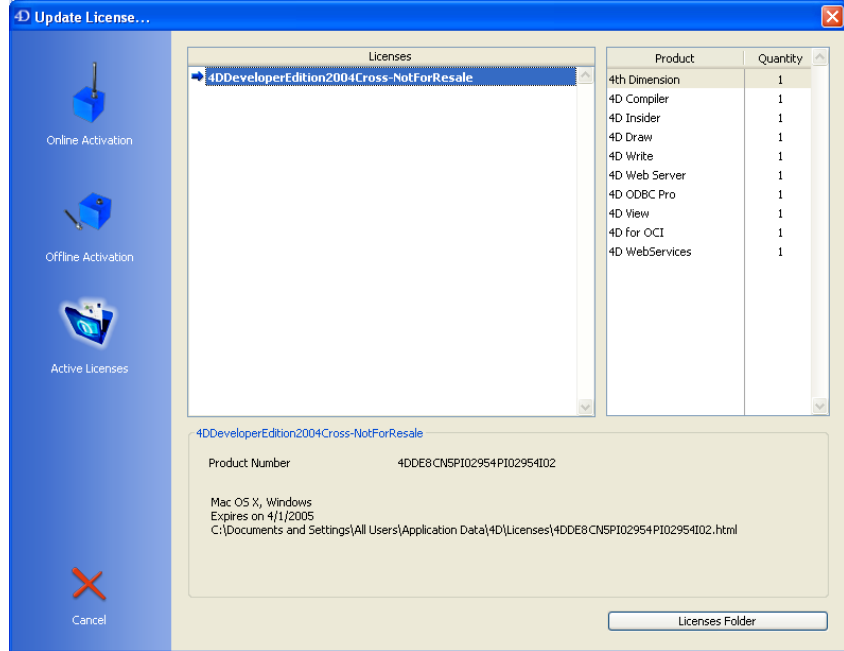
Keep in mind that you must indicate the product number with which you want to associate the expansion number.

You must restart the application for the new licenses to be taken into account.

## Management of Licenses

**Displaying licenses** You can display the 4D licenses installed on your machine as well as their properties on the “Active Licenses” page of the “Update License...” dialog box.

This page is displayed by default when you choose the **Update License...** command in the **Help** menu:



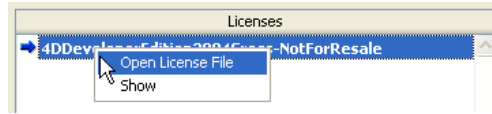
The “Licenses” area displays the list of licenses installed on the machine. Expansion licenses associated with main licenses (product licenses) appear as hierarchical sub-items.

When several licenses are present, the active license is indicated by an arrow. If plug-ins are used, there may be several simultaneous active licenses.

When you select a license in the list, two information areas are updated:

- The right-hand area displays the products, plug-ins and extensions included in the license. For multi-user licenses, the right-hand column indicates the number of simultaneous users allowed for the product.
- The area below the list of licenses indicates the characteristics of the selected license: number, platform(s), expiration date.

The information displayed in this window is taken from the license files stored in HTML format on your hard disk. You can display the contents of a license directly in your Web browser by choosing the **Open License File** command in the contextual menu of the list (**right click** under Windows and **Control+click** under MacOS on a license).



For more information about license files, refer to the following paragraph.

### Display the Licenses folder and its contents

All the license files installed in your 4D environment will be grouped in the **Licenses** folder placed on your hard disk. When they are opened using a Web browser, these files display information about the licenses they contain and their characteristics.

The **Licenses** folder is found at the following location:

- Windows: *Documents and Settings\All Users\Application Data\4D\Licenses*
- MacOS: *Library:Application Support:4D:Licenses.*

The location of this folder can vary according to the version or language of your operating system.

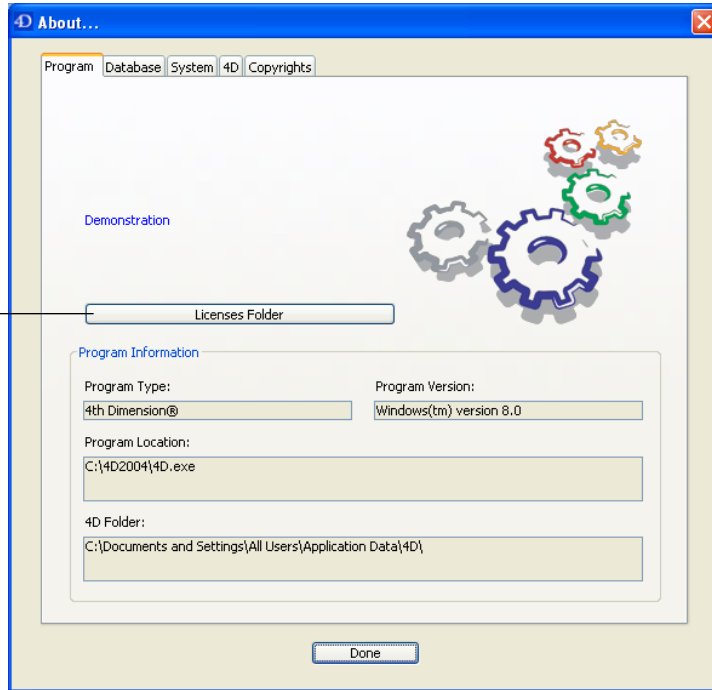
You can access this folder from 4D in two ways:

- In the "Update License" dialog box, choose the **Show** command in the contextual menu of the list of licenses (see previous paragraph) or click on the **Licenses Folder** button.

- In the About dialog box, click on the **Licenses Folder** button.

"About" window

Access to Licenses folder



When you choose one of these commands, 4<sup>th</sup> Dimension opens the **Licenses** folder in a standard system window. If you have activated your 4D application, the folder must contain at least one serialization file (html format file), named *XXXX.html*, where *XXXX* represents the product number.

If you have activated several different products, plug-ins or extensions, the folder will contain several serialization files.

To display the contents of a license file, open it using a Web browser. You can open the license file directly from the **Active Licenses** page of the "Update License..." dialog box using the contextual menu.

The information related to the license will be displayed as follows:

Product number ——— **Product Number: SPCL80CUS0107B**

Customer account ——— **Registration Date: 14 jui 2004 - 16:34:19**  
**User Name: W10100**

License type ——— **Company: 4D SA**  
**Lastname: Smith**  
**Firstname: Elizabeth**

License contents ——— **Expiration date: 15/08/2004**  
**Platform: MacOS or Windows**  
**Lot Number: Beta-testers 2004**  
**Serial content:**  
- 4D Engine  
- 4D Runtime Classic  
- 4D Runtime Interprété  
- 4D Server  
- 4D Mono  
- 4D Compiler  
- 4D Insider  
**Expansion connexion number: 10**  
**Expansion content:**  
- 4D Client

The information supplied may vary according to the type of license.